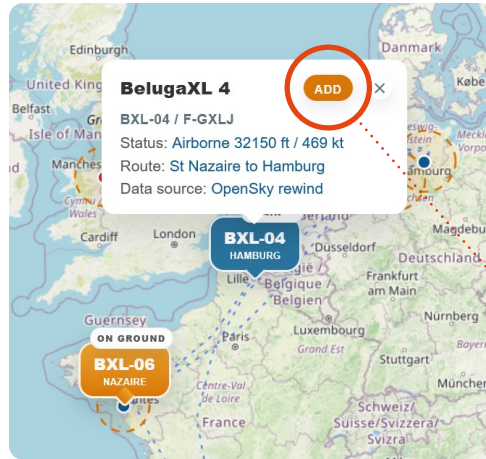


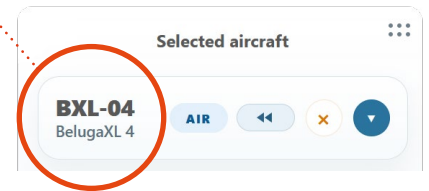
## Map Icons

Clicking once on a map icon will show aircraft details in a popup box. To monitor the progress of a specific aircraft during flight or in **Daily Rewind** mode (flight history for the day so far) double click on the icon or use the **ADD** button on the popup to add to **Selected Aircraft**.

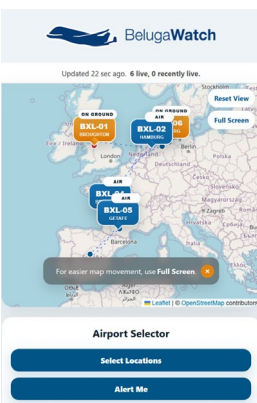
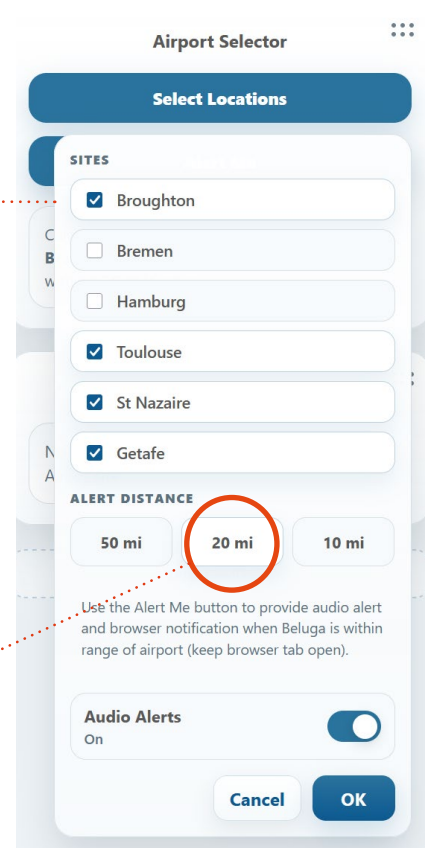
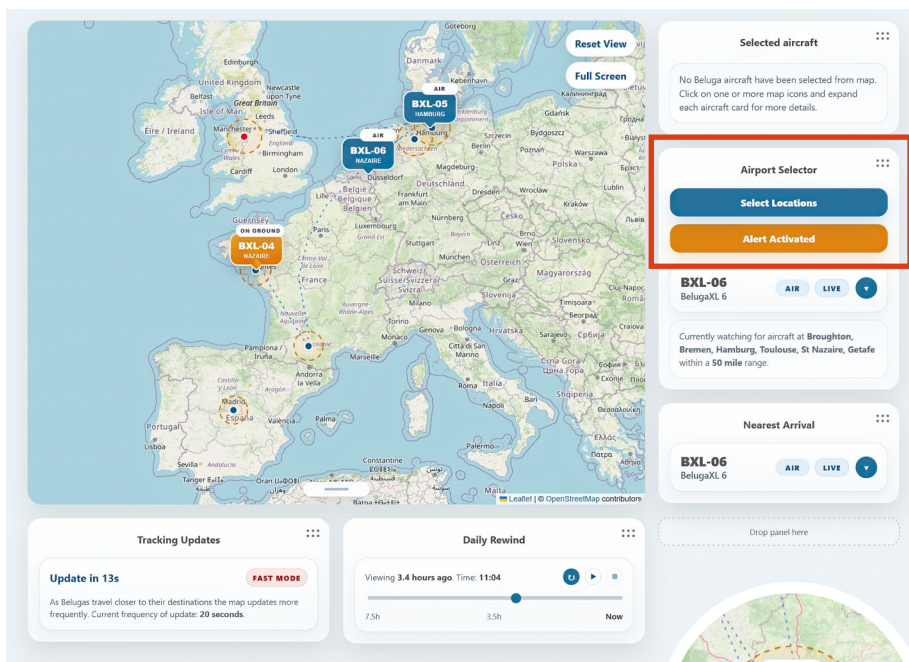


## Selected Aircraft

Use the dropdown arrow on the right of the **Selected Aircraft** panel to show more details for each of the aircraft. There are several badges displayed on the aircraft cards to indicate whether the aircraft is in the AIR, ON GROUND, using LAST live data (last recorded location) and in **Daily Rewind** mode (the rewind icon as seen in the example aircraft card below).



**Note:** On desktop version it is possible to drag and drop panels to suit your tracking requirements using the symbol in the top right corner.

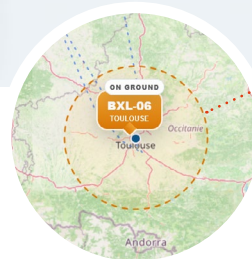


## Mobile Version

BelugaWatch has been optimised for mobile phones. Note that on mobile it is easier to move around the map and click on icons using **Full Screen** mode. Other key features such as Daily Rewind are still available by scrolling down the page and Alerts are fully functional on mobile versions of this web app.

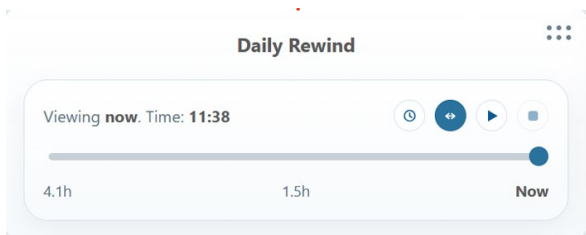
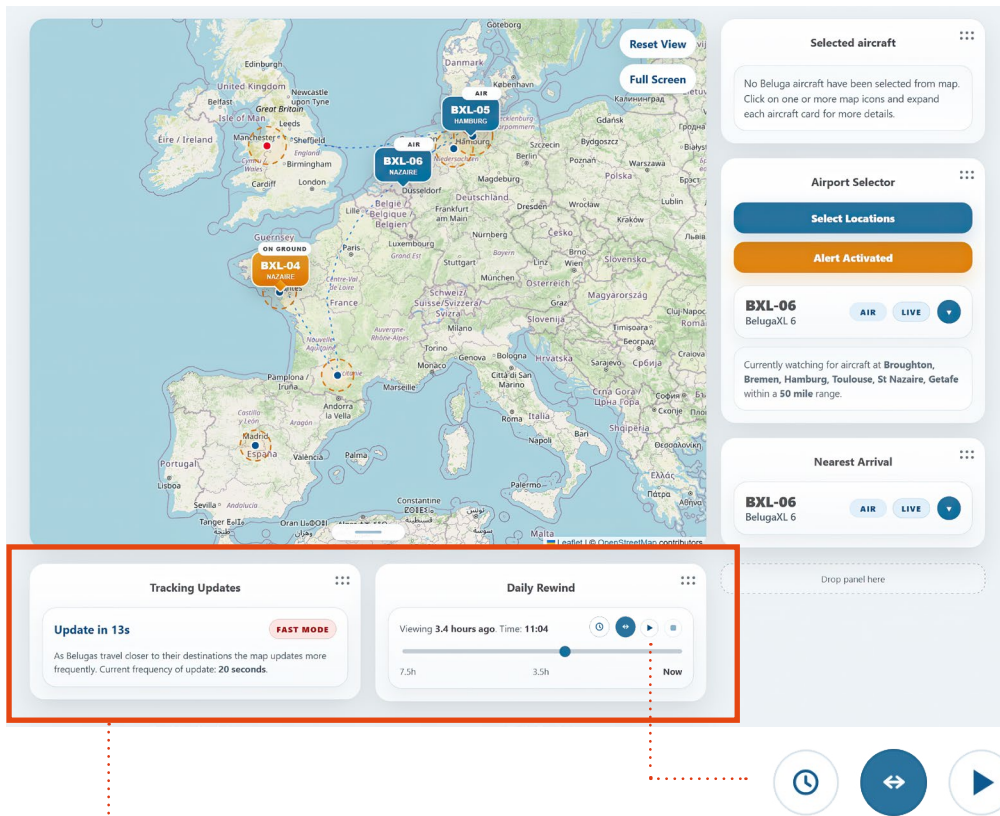
## Alert Distance

The circular image (above right) demonstrates how the orange line around a town or city represents the point at which a visual or audio message will be delivered - at 10, 20 or 50 miles from the aircraft destination.



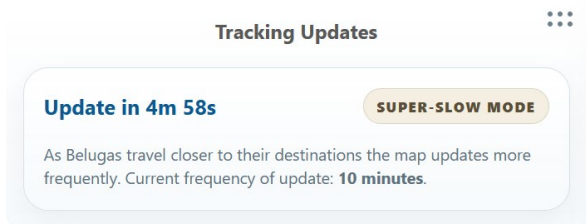
## Airport Selector

Click on the **Select Locations** button to reveal a dropdown panel with airport options, the distance you want the alert to activate within and whether you want to include **Audio Alerts**. Note that the browser tab or window must remain open for these alerts to function.



### Daily Rewind

Use the **Daily Rewind** feature to review aircraft details throughout the day so far. **Note:** To save OpenSky credits, between 23:00 and 06:00 (Europe/London time) there is no tracking. The **play / stop** buttons are used to animate the icons and data automatically and the **loop** button (arrows) determines whether this is in a linear fashion or bounce (animates backwards then forwards then backwards again by default). The **clock icon** enables you to see the previous day's Beluga movements.



### Tracking Updates

When aircraft are close to an airport the tracking increases in accuracy where FAST MODE is most accurate. Tracking gradually slows to MEDIUM, SLOW AND SUPER-SLOW MODE when aircraft move further away.

### Nearest Arrival

The nearest arrival shows the aircraft closest to an airport as an individual card.

**Note:** All cards in Selected Aircraft, Airport Selector and Nearest Arrival can be clicked on to reveal their location by zooming in on the main map. Use **Reset View** to zoom to default map view. For easiest interaction with map / icons use **Full Screen** mode.

